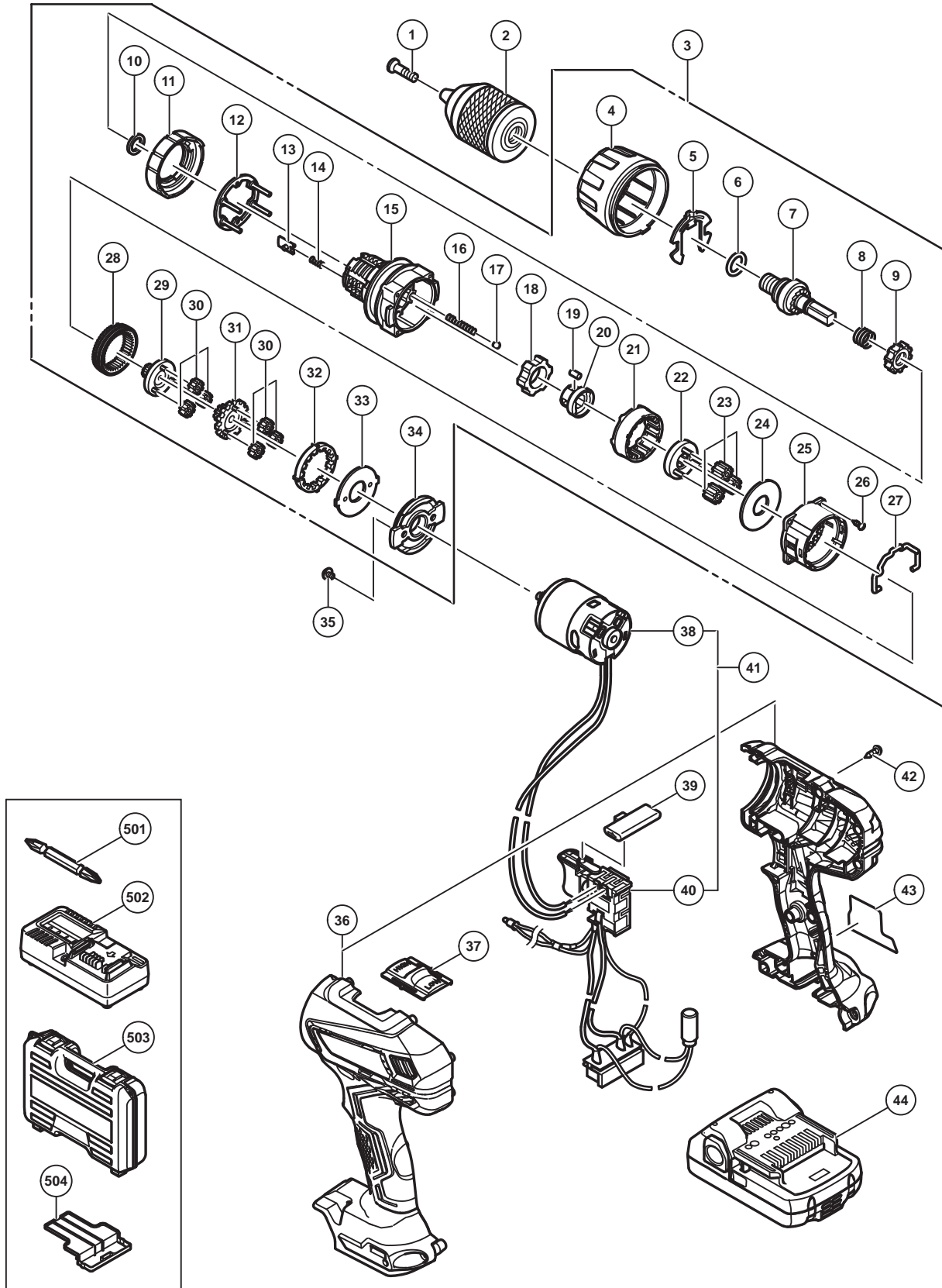


## ELECTRIC TOOL PARTS LIST

■ CORDLESS COMBI DRILL  
Model DV 18DGAL

2017-2-22  
(E1)



**PARTS**

DV 18DGAL

ITEM NO.	CODE NO.	DESCRIPTION	NO. USED	REMARKS
1	371343	SEAL LOCK LEFT-HAND SCREW M6	1	
2	371323	DRILL CHUCK 13MM (W/O CHUCK WRENCH)	1	
3	371333	GEAR BOX ASS'Y	1	INCLUD.4-34
4	371334	CLUTCH DIAL	1	
5	327146	CLICK SPRING	1	
6	327142	O-RING	1	
7	336351	SPINDLE	1	
8	327136	SPRING (C)	1	
9	327134	RATCHET (B)	1	
10	327147	WASHER (A)	1	
11	371335	NUT	1	
12	336877	WASHER	1	
13	327135	SLIP BLOCK	2	
14	327133	STOPPER SPRING	2	
15	336876	FRONT CASE	1	
16	327143	SPRING (A)	4	
17	306936	STEEL BALL D5	4	
18	336879	LOCK RING	1	
19	335946	NEEDLE ROLLER SET (4 PCS.)	4	
20	335944	SLEEVE	1	
21	328055	RING GEAR	1	
22	327139	CARRIER	1	
23	312705	PLANET GEAR (C) SET (3 PCS.)	3	
24	312704	WASHER (A)	1	
25	335959	REAR CASE	1	
26	371338	SCREW SET D3 X 12 (4 PCS.)	4	
27	332017	SHIFT ARM	1	
28	371337	SLIDE RING GEAR	1	
29	371336	PINION (C)	1	
30	332019	PLANET GEAR (A) SET (6 PCS.)	6	
31	332014	PINION (B)	1	
32	332023	FIRST RING GEAR	1	
33	312716	WASHER (B)	1	
34	371344	MOTOR SPACER	1	
35	317333	MACHINE SCREW (W/SP. WASHER) M4 X 6	2	
36	371389	HOUSING (A).(B) SET	1	
37	336855	SHIFT KNOB	1	
38	371341	MOTOR DC 18V	1	
39	339768	PUSHING BUTTON	1	
40	371342	SWITCH TERMINAL SET	1	
41	371340	WIRING ASS'Y	1	INCLUD.38,40
42	313687	TAPPING SCREW (W/FLANGE) D3 X 16 (BLACK)	9	
43		NAME PLATE	1	
44	333352	BATTERY BSL 1815 (EUROPE)	2	

**STANDARD ACCESSORIES**

DV 18DGAL

ITEM NO.	CODE NO.	DESCRIPTION	NO. USED	REMARKS
501	983006	+ DRIVER BIT NO.2 65L	1	
502		CHARGER (MODEL UC 18YKSL)	1	
503	336642	CASE	1	
504	329897	BATTERY COVER	1	

**OPTIONAL ACCESSORIES**

ITEM NO.	CODE NO.	DESCRIPTION	NO. USED	REMARKS
601	371345	HOOK SET	1	