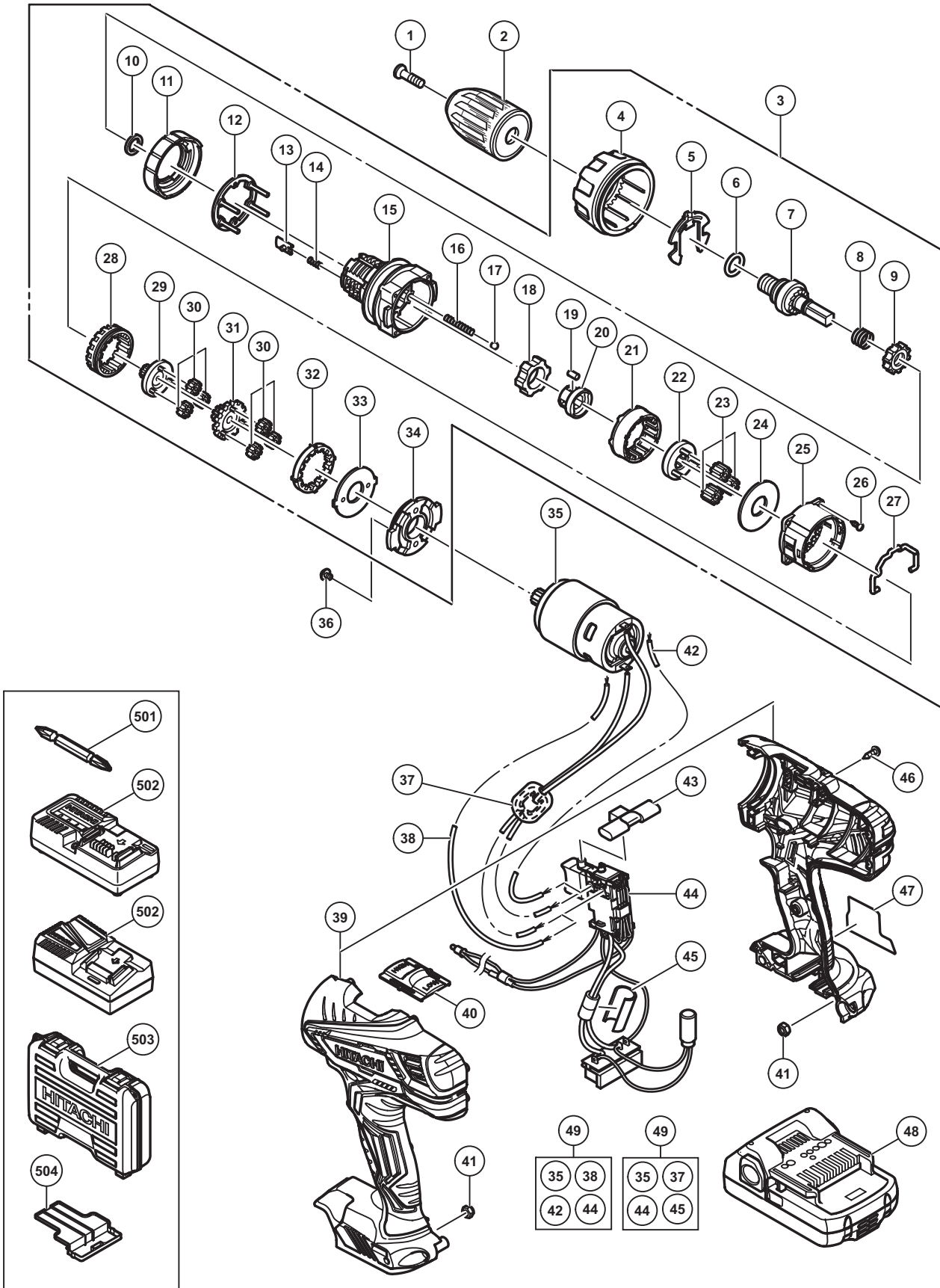


ELECTRIC TOOL PARTS LIST

CORDLESS IMPACT DRIVER DRILL 2014·4·21
Model DV 18DJL (E1)



PARTS

DV 18DJL

| ITEM NO. | CODE NO. | DESCRIPTION | NO. USED | REMARKS |
|----------|----------|--|----------|---|
| 1 | 311959 | SPECIAL SCREW (LEFT HAND) M6 X 23 | 1 | |
| 2 | 336885 | DRILL CHUCK 13VLRV-N (W/O CHUCK WRENCH) | 1 | |
| 3 | 336875 | GEAR BOX ASS'Y | 1 | INCLUD.4-34 |
| 4 | 336878 | CLUTCH DIAL | 1 | |
| 5 | 327146 | CLICK SPRING | 1 | |
| 6 | 327142 | O-RING | 1 | |
| 7 | 336351 | SPINDLE | 1 | |
| 8 | 327136 | SPRING (C) | 1 | |
| 9 | 327134 | RATCHET (B) | 1 | |
| 10 | 327147 | WASHER (A) | 1 | |
| 11 | 327145 | NUT | 1 | |
| 12 | 336877 | WASHER | 1 | |
| 13 | 327135 | SLIP BLOCK | 2 | |
| 14 | 327133 | STOPPER SPRING | 2 | |
| 15 | 336876 | FRONT CASE | 1 | |
| 16 | 327143 | SPRING (A) | 4 | |
| 17 | 306936 | STEEL BALL D5 | 4 | |
| 18 | 336879 | LOCK RING | 1 | |
| 19 | 335946 | NEEDLE ROLLER SET (4 PCS.) | 4 | |
| 20 | 335944 | SLEEVE | 1 | |
| 21 | 328055 | RING GEAR | 1 | |
| 22 | 327139 | CARRIER | 1 | |
| 23 | 312705 | PLANET GEAR (C) SET (3 PCS.) | 3 | |
| 24 | 312704 | WASHER (A) | 1 | |
| 25 | 335959 | REAR CASE | 1 | |
| 26 | 324357 | SCREW SET D3 X 12 (4 PCS.) | 4 | |
| 27 | 332017 | SHIFT ARM | 1 | |
| 28 | 332013 | SLIDE RING GEAR | 1 | |
| 29 | 332012 | PINION (C) | 1 | |
| 30 | 332019 | PLANET GEAR (A) SET (6 PCS.) | 6 | |
| 31 | 332014 | PINION (B) | 1 | |
| 32 | 332023 | FIRST RING GEAR | 1 | |
| 33 | 312716 | WASHER (B) | 1 | |
| 34 | 312698 | MOTOR SPACER | 1 | |
| 35 | 332020 | MOTOR DC 18V | 1 | |
| 36 | 317333 | MACHINE SCREW (W/SP. WASHER) M4 X 6 | 2 | |
| * 37 | 337136 | INTERNAL WIRE FERRITE SET | 1 | FOR EUROPE,TUR,RUS,AUT,NOR,SWE,DEN,FIN |
| * 38 | 337117 | INTERNAL WIRE (BLACK) 110L | 1 | EXCEPT FOR EUROPE,TUR,RUS,AUT, NOR,SWE,DEN,FIN |
| 39 | 336851 | HOUSING (A).(B) SET | 1 | |
| 40 | 336855 | SHIFT KNOB | 1 | |
| 41 | 327002 | LOCK NUT M4 (BLACK) | 2 | |
| * 42 | 324499 | INTERNAL WIRE (RED) 140L | 2 | EXCEPT FOR EUROPE,TUR,RUS,AUT, NOR,SWE,DEN,FIN |
| 43 | 336856 | PUSHING BUTTON | 1 | |
| * 44 | 336630 | SWITCH TERMINAL SET | 1 | |
| * 44 | 336632 | SWITCH TERMINAL SET | 1 | FOR EUROPE,TUR,RUS,AUT,NOR,SWE,DEN,FIN |
| * 45 | 337137 | SUPPORT (D) | 1 | FOR EUROPE,TUR,RUS,AUT,NOR,SWE,DEN,FIN |
| 46 | 313687 | TAPPING SCREW (W/FLANGE) D3 X 16 (BLACK) | 9 | |
| 47 | | NAME PLATE | 1 | |

PARTS

DV 18DJL

| ITEM NO. | CODE NO. | DESCRIPTION | NO. USED | REMARKS |
|----------|----------|-----------------------------------|----------|---|
| * 48 | 335788 | BATTERY BSL 1825 (EUROPE,AUS,NZL) | 2 | INCLUD.504 |
| * 48 | 333352 | BATTERY BSL 1815 (EUROPE) | 2 | INCLUD.504 |
| * 48 | 335309 | BATTERY BSL 1815 (BRA) | 2 | INCLUD.504 |
| * 48 | 334725 | BATTERY BSL 1815 (CHN) | 2 | INCLUD.504 |
| * 48 | 334726 | BATTERY BSL 1815 (TPE) | 2 | INCLUD.504 |
| * 49 | 337192 | WIRING SET | 1 | INCLUD.35,38,42,44 |
| * 49 | 337193 | WIRING SET | 1 | INCLUD.35,37,44,45 FOR EUROPE, TUR,RUS,AUT,NOR,SWE,DEN,FIN |
| | | | | |
| | | | | |
| | | | | |
| | | | | |
| | | | | |
| | | | | |
| | | | | |
| | | | | |
| | | | | |
| | | | | |

STANDARD ACCESSORIES

| ITEM NO. | CODE NO. | DESCRIPTION | NO. USED | REMARKS |
|----------|----------|---------------------------|----------|---------|
| 501 | 983006 | + DRIVER BIT NO.2 65L | 1 | |
| * 502 | | CHARGER (MODEL UC 18YKSL) | 1 | |
| * 502 | | CHARGER (MODEL UC 18YFSL) | 1 | |
| 503 | 336642 | CASE | 1 | |
| 504 | 329897 | BATTERY COVER | 1 | |
| | | | | |
| | | | | |
| | | | | |
| | | | | |
| | | | | |

OPTIONAL ACCESSORIES

| ITEM NO. | CODE NO. | DESCRIPTION | NO. USED | REMARKS |
|----------|----------|----------------------------|----------|---------|
| 601 | 955657 | - DRIVER BIT (A) 3MM X 70L | 1 | |
| 602 | 955659 | - DRIVER BIT (A) 4MM X 70L | 1 | |
| 603 | 955674 | - DRIVER BIT (A) 6MM X 70L | 1 | |
| 604 | 983004 | + DRIVER BIT NO.1 65L | 1 | |
| 605 | 983011 | + DRIVER BIT NO.3 65L | 1 | |
| | | | | |
| | | | | |
| | | | | |
| | | | | |
| | | | | |