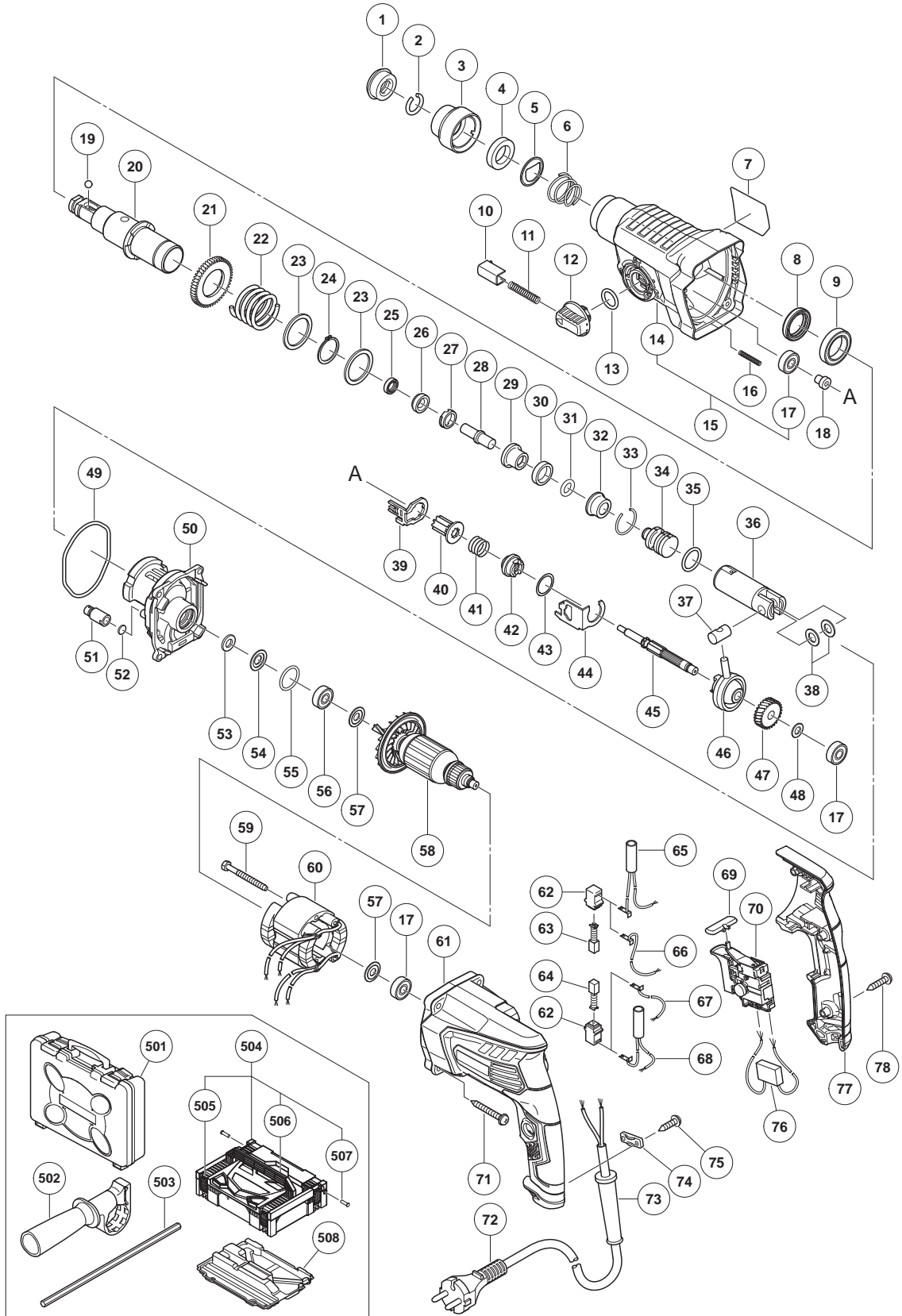


ELECTRIC TOOL PARTS LIST

■ ROTARY HAMMER Model DH 24PH2

2019- 3 -29
(E1)



PARTS

DH 24PH2

| ITEM NO. | CODE NO. | DESCRIPTION | NO. USED | REMARKS |
|----------|----------|------------------------------|----------|--------------|
| 1 | 306345 | FRONT CAP | 1 | |
| 2 | 306340 | STOPPER RING | 1 | |
| 3 | 374436 | GRIP | 1 | |
| 4 | 374437 | BALL HOLDER | 1 | |
| 5 | 374435 | HOLDER PLATE | 1 | |
| 6 | 322812 | HOLDER SPRING | 1 | |
| 7 | | NAME PLATE | 1 | |
| 8 | 335259 | OIL SEAL | 1 | |
| 9 | 6805BB | BALL BEARING 6805 | 1 | |
| 10 | 322789 | PUSHING BUTTON | 1 | |
| 11 | 317223 | PUSHING SPRING | 1 | |
| 12 | 334011 | CHANGE LEVER | 1 | |
| 13 | 878885 | O-RING (S-18) | 1 | |
| 14 | 374618 | GEAR COVER | 1 | |
| 15 | 375016 | GEAR COVER ASS'Y | 1 | INCLUD.14,17 |
| 16 | 335800 | SPRING (E) | 1 | |
| 17 | 608VVM | BALL BEARING 608VVC2PS2L | 3 | |
| 18 | 374422 | SHAFT HOLDER (B) | 1 | |
| 19 | 335300 | STEEL BALL D7.0 (10 PCS.) | 1 | |
| 20 | 374426 | CYLINDER | 1 | |
| 21 | 335265 | SECOND GEAR | 1 | |
| 22 | 374430 | SPRING (B) | 1 | |
| 23 | 301679 | WASHER (A) | 2 | |
| 24 | 948310 | RETAINING RING FOR D30 SHAFT | 1 | |
| 25 | 335262 | OIL SEAL (A) | 1 | |
| 26 | 374431 | HAMMER HOLDER (B) | 1 | |
| 27 | 374427 | HOLDER SLEEVE | 1 | |
| 28 | 374432 | SECOND HAMMER | 1 | |
| 29 | 374429 | HAMMER HOLDER (A) | 1 | |
| 30 | 322805 | DAMPER (A) | 1 | |
| 31 | 322808 | O-RING (C) | 1 | |
| 32 | 324524 | DAMPER HOLDER | 1 | |
| 33 | 322807 | STOPPER RING | 1 | |
| 34 | 374443 | STRIKER | 1 | |
| 35 | 372816 | O-RING | 1 | |
| 36 | 372817 | PISTON | 1 | |
| 37 | 335793 | PISTON PIN | 1 | |
| 38 | 335794 | PISTON WASHER | 2 | |
| 39 | 374434 | LOCK PLATE | 1 | |
| 40 | 374440 | SECOND PINION | 1 | |
| 41 | 323182 | CLUTCH SPRING | 1 | |
| 42 | 375022 | CLUTCH | 1 | |
| 43 | 331315 | WASHER | 1 | |
| 44 | 374439 | CHANGE PLATE (C) | 1 | |
| 45 | 374438 | SECOND SHAFT | 1 | |
| 46 | 335249 | RECIPROCATING BEARING | 1 | |
| 47 | 374441 | FIRST GEAR | 1 | |
| 48 | 374442 | BEARING WASHER | 1 | |
| 49 | 335245 | O-RING D72.2 | 1 | |
| 50 | 374433 | INNER COVER | 1 | |

STANDARD ACCESSORIES

DH 24PH2

| ITEM NO. | CODE NO. | DESCRIPTION | NO. USED | REMARKS |
|----------|----------|--------------------------|----------|----------------|
| 501 | 374619 | CASE | 1 | |
| 502 | 324548 | SIDE HANDLE | 1 | |
| 503 | 303709 | DEPTH GAUGE | 1 | |
| 504 | 337739 | CASE ASS'Y (STACKABLE 1) | 1 | INCLUD,505-507 |
| 505 | 336472 | LATCH | 4 | |
| 506 | 336473 | HANDLE | 1 | |
| 507 | 336474 | HINGE | 2 | |
| 508 | 337741 | INNER TRAY | 1 | |
| | | | | |
| | | | | |

OPTIONAL ACCESSORIES

| ITEM NO. | CODE NO. | DESCRIPTION | NO. USED | REMARKS |
|----------|----------|--|----------|----------------|
| 601 | 306885 | DUST COLLECTOR (B) ASS'Y | 1 | INCLUD.602,610 |
| 602 | 986802 | DUST COLLECTOR ASS'Y | 1 | INCLUD.603-609 |
| 603 | 986803 | DUST COVER | 1 | |
| 604 | 986804 | SEAL COVER | 1 | |
| 605 | 948310 | RETAINING RING FOR D30 SHAFT | 1 | |
| 606 | 958063 | WASHER | 1 | |
| 607 | 959150 | STEEL BALL D6.35 (10 PCS.) | 19 | |
| 608 | 986805 | OUTER RACE | 1 | |
| 609 | 986806 | SOCKET | 1 | |
| 610 | 306910 | SOCKET ADAPTER (B) | 1 | |
| 611 | 971787 | DUST CUP | 1 | |
| 612 | 931844 | STOPPER | 1 | |
| 613 | 321814 | DRILL CHUCK 13VLRB-D | 1 | INCLUD.614 |
| 614 | 331966 | FLAT HD. SCREW (LEFT HAND) M6 X 20 | 1 | |
| 615 | 321813 | DRILL CHUCK 13VLD-D | 1 | |
| 616 | 971511Z | + DRIVER BIT (A) NO.2 25L | 1 | |
| 617 | 971512Z | + DRIVER BIT (A) NO.3 25L | 1 | |
| 618 | 971794 | ANCHOR SETTING ADAPTER A W1/4" (MANUAL) | 1 | |
| 619 | 971795 | ANCHOR SETTING ADAPTER A W5/16" (MANUAL) | 1 | |
| 620 | 971796 | ANCHOR SETTING ADAPTER A W3/8" (MANUAL) | 1 | |
| 621 | 971797 | ANCHOR SETTING ADAPTER A W1/2" (MANUAL) | 1 | |
| 622 | 971798 | ANCHOR SETTING ADAPTER A W5/8" (MANUAL) | 1 | |
| 623 | 971799 | ANCHOR SETTING ADAPTER B W1/4" (MANUAL) | 1 | |
| 624 | 971800 | ANCHOR SETTING ADAPTER B W5/16" (MANUAL) | 1 | |
| 625 | 971801 | ANCHOR SETTING ADAPTER B W3/8" (MANUAL) | 1 | |
| 626 | 971802 | ANCHOR SETTING ADAPTER B W1/2" (MANUAL) | 1 | |
| 627 | 971803 | ANCHOR SETTING ADAPTER B W5/8" (MANUAL) | 1 | |
| 628 | 320859 | SYRINGE (BLOW-OUT BULB TYPE) | 1 | |
| 629 | 944477 | COTTER | 1 | |
| 630 | 982684 | CENTER PIN (A) 109L FOR CORE BIT D32-38 | 1 | |
| 631 | 982685 | CENTER PIN (B) 104L FOR CORE BIT D45-90 | 1 | |
| 632 | 335781 | GREASE FOR ROTARY HAMMER (500G) | 1 | |
| 633 | 335782 | GREASE FOR ROTARY HAMMER (60G) | 1 | |
| | | | | |
| | | | | |